

Feature presenter for April 2012: Mark Knize

This month Mark Knize is our featured demonstrator illustrating "wooden rings". Mark has a featured article on "wooden rings" in the April edition of American Woodturner, so you will certainly want to save this article for future reference. Mark is a professional artist and woodturner who will share his source of inspiration, decorative design motifs, selections of woods and dyeing process. He will include the necessary information on ring sizes and the safety aspect of drilling these holes. Mark's mastery of this process will put you way ahead on the learning curve of making rings. Bring a notebook and become interactive with the demonstrator by drawing the face of some rings that you will turn. Then go back and read Judy Ditmer's small book on making jewelry!





The Bay Area Woodturners Association is a local chapter of the American Association of Woodturners. Our purpose is to provide a meeting place for local turners to share ideas and techniques and to educate the general public regarding the art of turning. The Association usually meets the second Saturday of each month at the Castro Valley High School cafeteria. The Association periodically sponsors exhibitions and demonstration by local and internationally known turners.

President

Jim Rodgers
Jlrogers236@comcast.net

Vice President

Don White
donjoannew@att.net

Treasurer

Bill Mellberg
jbmellberg@comcast.net

Secretary

Kathy Kennedy
Kkkdp54@gmail.com

Member-at-Large

Ros Harper Rozharper11@yahoo.com

Librarian

Cindy Navarro Nava1uni@comcast.net

Membership

Karen Rice
karen@loonlover.net
Hugh Bevin-Thomas (Assistant)

Webmaster

John Prout jcprou@gmail.com

Newsletter Editor

Donna Lauzon AmazonDL@gmail.com

Educational Coordinator

Wayne Shipman
Wayne.shipman@comcast.net

Store Managers:

Rich Kalish rikalish@yahoo.com

Audio Video

Bruce Speights retired6302004@yahoo.com

Facility Liaison

Dean Adkins Adkd@chevron.com

Woodmeister:

Ron Tinay rtin1@sbcglobal.net

Staff Photographer:

Fred Deadrick
fdeadrick@comcast.net

Club Meetings

Meetings are the 2nd Saturday of each month unless otherwise noted. **(May) meeting: to be on Sunday due to hall availability**
8:30 doors open for setup, use store and library, swap ideas, view Displays

9:30—12:30 meeting and demo

BAWA meets in the cafeteria at Castro Valley High School, located at 3870 Mabel Ave; Castro Valley.

2012 Event Schedule

Apr 14	Mark Knize: “Decorated Rings”
Apr 14	Color demonstration after meeting
Apr 21	Forest Home Farms Sheep Shearing Festival 11AM-3PM http://www.srhf.org/events
May 6 (SUNDAY)	Graeme Priddle: http://www.graemepiddle.com
May 7 (Monday)	Workshop with Graeme Priddle at Don White’s workshop
May 17-19	Utah Woodturning Symposium
Jun 2	Pending, Glenn Kreug: Minitures
Jun 8-10	AAW Symposium in San Jose http://www.woodturner.org/sym/sym2012/
July 14	Annual Picnic
Aug 11	Don White and friends: Technical Bonanza- Jigs and Fixtures Wizardry
Sept 8	Molly Winton: http://www.turningmaven.com
Oct 13	Don White and Bruce Speights: Kinetic Sculptures
October 18-21	3 rd Segmenting Symposium. Lake Tahoe http://www.segmentedwoodturners.org
Nov 10	Suggest a professional
December 8	Annual Party and Competition

BAWA Officers Meeting -

Officer meetings are open to all members. Contact Jim Rodgers if you would like to be on the agenda.

March 2012 presenter: Jimmy Clewes

Jimmy Clewes showed us a number of his tricks at the March demonstration and reminded us that woodturning is a lot like golf: there can be no success without practicing for many hours with each golf club and appreciating that everyone's golf swing is different. While there are many "best" ways to turn, Jimmy shared some of his tricks for "efficient" turning so you make the best use of your time. Here are a few of his gems:

- Consider using dovetail jaws because they pull the work piece into the chuck.
- Tenons leave more room for completing the bottom of bowls than recesses and offer more options for foots.



- Many turners work from the bottom to the top of the bowl and take too much off the bottom to have a natural curve on the entire piece. Consider turning *out* from the bottom instead of *up* because a natural curve gives the effect of lifting the entire piece.
- When turning the inside of the bowl, Jimmy creates the rim of the bowl and establishes a wall thickness depth by turning down an inch or so deep on the side of the bowl. Then he turns a series of shallow to deeper step cuts from the center toward the outside of the bowl with the last step connecting to the side depth of one inch. Then he repeats the process. This technique leaves enough mass at the center to minimize vibration when increasing the wall depth, and also then removes enough center wood so the bowl gouge has enough room to start the next depth cut. This technique also has the added benefit of being well supported cuts.
- Consider using quick release handles so tools can be easily switched out. Check them out at Thompson Tools.

Website Updating

Ros Harper will chair a small team to make recommendations about refreshing the website in advance of the AAW meeting in June. Dennis Lawrence, John Cobb, Taree Klausner, Jim Campbell, and John Prout volunteered to help generate ideas for the Board of Directors. If you have suggestions for what you want to see on the site, please contact any of these members. Thanks!

The wood contributors, Thanks a bunch keep the wood coming..

Dave Morris---Plum, Pepperwood and Iron Bark Eucalyptus



Return of the Kiwi

Graeme Priddle returns this May, four years ago to the month from his last BAWA visit. If you missed him before then you probably don't understand terminology such as "wonkie" or "jiggery pokie" or "got a grabby", so be sure to catch him this time. Note that the May meeting is not on Saturday due to scheduling conflicts with the high school; rather it's on Sunday, May 6th and will be a full day demonstration.

During his last visit Graeme stressed three key things that must be understood to become an accomplished turner with consistently good results. First, one must understand wood grain and it's orientation in the turning. The second is maintaining a sharp edge on your tools, particularly for the final finishing cuts. The third key is to gain an understanding of the bevel and its support of the tool against the wood. To illustrate these points he ran the lathe in reverse and with a gouge under the tool rest started shaping a round! Graeme claimed this was a better way to turn as the shavings went straight to the floor and kept the shop cleaner, but eventually admitted it was a demo trick to get people thinking.



Graeme's sculptural work incorporates a lot of embellishment - carving, texturing, pyrography, stippling, masking and painting, metal, fiber, etc. However his version of pyrography is actually more like branding with a turbo-charged hand piece. The red-hot tip literally explodes the wood with zippy-zingy sound, and flames shoot upwards 3 to 4 inches for a couple seconds! To accomplish this he modifies a 12 vdc battery charger and drives it thru a dimmer switch to adjust the glow of the tip.

All of Graeme's work is influenced by Maori culture and New Zealand's nature - rainforests, rivers, bays, beaches and ocean. He's an accomplished wood turner / sculptor who lives and works on 100 acres of rain forest outside Whangarei, New Zealand. The Maori translation for Whangarei is "Bountiful Land" and there are many great beaches and bays in the area, all obvious Northland influences in Graeme's turnings. Visit Graeme's website at <http://graemepiddle.com/> to explore his work and prepare for his return visit.

Don't forget to check out the AAW Symposium Page: <http://www.woodturner.org/sym/sym2012/>

AAW has been conducting annual woodturning symposia since 1987. This page provides information on the upcoming 26th Annual AAW symposium, to be held in San Jose, California Friday June 08 through Sunday June 10, 2012, at the San Jose Convention & Cultural Facilities.

Volunteer for San Jose!

The AAW Symposium is two months away and it's time to gear-up the volunteer effort! Several BAWA members are chairing committees and need your help with the symposium. Tables will be set up at the April meeting so that you can talk to BAWA's local committee chairs and sign up to help. There are many volunteer opportunities to fill, which are described below, so please consider helping any way you can!

The symposium starts Friday June 8th and runs thru Sunday June 10th at the San Jose Convention & Cultural Facilities. It has never been in the SF Bay Area before, and is only in the western United States every 4th year, so this is an opportunity that you may not see again in many years. Its 3 action packed days with over 150 demonstrations and panel discussions, the largest turning trade show in the world, a huge instant gallery and several turning exhibits and raffles. The Saturday night banquet carries a cost of \$55, which is followed by the EOG Auction. Additional information on the symposium can be found in BAWA's January, February and March newsletters, or visit the AAW website for more information, including the demonstration schedule which is now available at: <http://www.woodturner.org/sym/sym2012/>



If you have not registered do so soon. Registration for AAW members is \$250 thru May 15th and \$310 for non-members. After May 15th the registration fee increases to \$300 for members and \$360 for non-members, and after May 28th its \$350 and \$410 respectively. AAW offers a discounted registration for spouses (\$150) and for students ages 19 to 25 (\$100), and youth ages 10 to 18 can register for free with a paying member. You can register several ways:

- On-line in the "Members" area: <http://woodturner.org/member/MemberLogOn.asp>
- By snail-mail: <http://www.woodturner.org/sym/sym2012/2012SymposiumRegistrationCard.pdf>
- By phone: 651-484-9094



AAW relies on the local chapters and their members to plan organize and prepare for the symposium. Volunteers from throughout the US are then relied upon to set-up and help run the symposium. Thursday June 7th is "set-up" day and many volunteers are needed to get the symposium ready to roll. Volunteering on Thursday really doesn't cut into your symposium experience at all. Volunteers are also needed during the symposium to make it all happen successfully, but here the opportunities can be very rewarding.

Other committees are being filled by the Silicon Valley Woodturners and the West Bay Woodturners, as well as the AAW. They may need additional volunteer help as well, which we will discuss more at the May meeting. For now we need to fill the BAWA committees as soon as possible. The following provides a description of these opportunities to help, as well as whom to contact to volunteer.



1. Local Shipping: This committee is responsible for receiving shipments from the AAW and participants, and then storing them until the symposium. Volunteers are needed to load the boxes into trucks or trailers on Wednesday afternoon, and then unload everything into the convention center on Thursday, which is set-up day. As all of the work will be before the symposium starts on Friday, so you lose no time during the symposium. If you can help, please contact Dean Adkins (ADKD@chevron.com) who co-chairs this committee. You do not have to be registered to help.

2. Registration: These volunteers help the AAW staff with registration, basically handing out registration packets to the attendees on Thursday afternoon and Friday morning. AAW staffers take over at noon on Friday, freeing up the volunteers to enjoy the rest of the symposium. If you can help, please contact Jeff and Demi Tanner (jd_tanner@msn.com) who co-chair this committee. You do not have to be registered to help, and spouses and friends are encouraged to volunteer.

3. Instant Gallery EOG Auction: The primary fundraiser for the Educational Opportunity Grant (EOG) program is the symposium auction. The EOG Auction starts in the Instant Galley with ~150 turnings in a silent auction, but the 65 pieces with the highest bids move to a live auction at the banquet Saturday night. Volunteers are needed to pack-up these turnings on Saturday afternoon, move them to the banquet room, set them up for the live auction and then re-pack them after they're sold. Volunteers will be handling work from some of the best turners in the world, so klutzes need not apply! Volunteers are also needed as "spotters" during the live auction. If you're a lively, outgoing person and can work the crowd to bid higher, this is the job for you! If you can help in either way, please contact Jim Rodgers (jlrogers236@comcast.net) who chairs this committee. You do not have to be registered to help, and spouses and friends are encouraged to volunteer.

4. Equipment Committee: This committee manages all the equipment and supplies needed for the turning demonstrations. Lathes for the demonstration rooms are loaned by the major lathe manufacturers, AAW provides chucks and live centers, and the demonstrators provide some of the equipment and supplies they need. But, everything else that's needed is borrowed from local club members. As the symposium draws closer you may see e-mails asking for equipment or supplies to be loaned, so please consider filling the requests. Anything loaned is guaranteed to be returned or replaced. Thursday is set-up day which is when volunteers move all the equipment and supplies into the tool room, except for the lathes which AAW handles. During the symposium equipment and materials are moved in and out of the demonstration rooms, and then Sunday afternoon late everything is tallied, packed-up and moved out. As you can imagine it takes quite a few volunteers on Thursday and again Sunday afternoon late, but volunteers are also needed to staff the tool room during the symposium. If you can help, please contact Jim Abreu (jkabreu9@comcast.net) who co-chairs this committee. You do not have to be registered to help.

5. Demonstrator Assistant: For most attendees the highlight of a symposium is the turning demonstrations. There will be 4 demo time slots on Friday, 4 again on Saturday and 3 on Sunday, with 12 or 13 different demonstrations or panel discussions to choose from in each time slot. As a demonstrator assistant you will help the demonstrator set-up and get ready for the demonstration; run the video switching box; help to manage any problems, interruptions or disturbances during the demonstration; and clean up after the demonstration to prepare for the next demo. Basically you assist the demonstrator and videographer as needed. The perk for volunteering is that you get to meet and work with a demonstrator, perhaps a Richard Raffan or a Jean-Francois Escoulen! You also get a great seat for the demonstration and a free AAW symposium t-shirt. If you can help, please contact John Ellis (nmwtwebman@aol.com) who is the National Volunteer Coordinator, and copy Bill Mellberg (jbmellberg@comcast.net) who chairs this committee. Please state which demonstrator(s) you want to assist (in order of preference) and how many demonstrations you are willing to work. You have to be a registered participant to volunteer as a Demonstrator Assistant.

6. International Demonstrator Greeting: AAW provides local transportation for all of the international demonstrators. This committee is responsible for picking them up at the airport and driving them to their convention center hotel; then taking them back to the airport after the symposium ends. It's a pretty simple job and you lose no time during the symposium. If you can help, please contact Norm Robinson (normrobinson@hotmail.com) who chairs this committee. You do not have to be registered to help, and spouses and friends are encouraged to volunteer.

7. Wood and Materials Committee: This committee provides and prepares turning stock for the International Demonstrators and for the Youth Turning Room. They may ask for help in locating and cutting wood, or for

specific turning stock that they can't locate. Please consider helping them if they ask for assistance. If you can help, please contact Bob Nolan (jbjn@astound.net) who co-chairs this committee. You do not have to be registered to help.

8. Youth Training Aids: AAW sets up a Youth Turning Room with 25 mini-lathes for kids 18 and younger to learn to turn over a total of 10 rotations, Friday thru Sunday. If you like working with kids this is a great opportunity, and there's no preparation work on your part. You will observe, coach, aid and encourage 2 youth turners, explaining and reinforcing the techniques and procedures of the class instructor. Approximately 80 volunteers are needed, but in addition to local volunteers the slots are filled with members from across the country. This is usually a very rewarding experience, particularly for the kids as they can win a mini-lathe complete with tools, a chuck and a face shield. If you can help, please contact John Ellis (nmwtwebman@aol.com) who is the National Volunteer Coordinator, and copy Corwin Jones (jones.corwin@comcast.net) who co-chairs this committee. You do not have to be registered to help, but do have to be an AAW member so that the insurance coverage is in effect.

Craft Supplies 13% Discount Program

Many members have participated in the Craft Supplies 13% Discount Program and can attest to the great deals. You get the 13% discount on any item, including items on sale or in the closeout bin, and the S&H is free and there's no tax. Quantity discounts are valid – several people ordered in numbers sufficient to get to a quantity discount of an additional 10%, 15% or even 19%. For example, if you order 50 of the Apprentice Fancy Slimline pen kits the price drops to \$1.32 each, and you can order any combination of the 3 finishes. Get with a friend and pool your orders.

Norm Robinson collects orders from members at the monthly meetings, and by e-mail in-between meetings. When we get to the \$1000 minimum the order is placed, and is typically delivered in 3 days. Orders are available for pick-up at next monthly meeting, or if you can't wait call Norm and you can get your loot early!

To recap the way the program works:

1. BAWA needs a minimum order of \$1000, and when reached BAWA places a single order.
2. The discount of 13% applies to any published price, but availability is not guaranteed on close-outs.
3. "Freight Added" items do not qualify for the 13% discount, i.e. generally heavy items like lathes and grinders are excluded.
4. Limit of 2 gift certificates can be used per BAWA order – first come first served, so be 1st or 2nd in line with your certificate.
5. Craft Supplies covers the S&H costs and there's no tax, but the order must ship to a single address.
6. Orders can be placed at our regular meetings with Norm Robinson using BAWA order forms.
7. Orders can be placed by e-mail with Norm (normrobinson@hotmail.com) either by filling out an electronic order form (which Norm can e-mail you) or by sending Norm all the pertinent information. As a minimum this information must include the catalog item number, catalog page number, item description, the quantity ordered and the item price before 13% discount.
8. You can also call Norm (415-420-3492) to place an order, but have to follow up with an e-mail to Norm that confirms all the information required above. If you forget to send the follow-up e-mail then you can't expect Norm to remember to place your phone order.
9. When an order arrives the items can be picked-up, but you have to make payment before you can take your loot.

If you want to place an order or just have questions as to how it works, contact Norm Robinson at the next meeting, send him an e-mail at normrobinson@hotmail.com or call him at 415-420-3492. If you don't have a Craft Supplies catalog, be sure to pick one up at the next meeting.

Membership Information

We signed up 5 new members in February. I will start with Walter Deartdorff, who hales from Hickman, CA (for those of you like me who have never heard of this place, it is straight east of Modesto, 1 hr. 35 minutes from Castro Valley, and had a population of 641 people in 2010). Walter works on a Stubby lathe. Coming from closer by, in Oakland, are two women (joining our growing ranks of women turners!) Melissa Washburn, and Elizabeth Dubravac, who have both been turning about a year, attend classes at Mt. Diablo Adult Ed, and work on a Jet. George Hamilton joins us from Walnut Creek, and has a Powermatic lathe. Last, but certainly not least, is Arturo Gomez, a new turner from Martinez, working on a Delta midi.

A hearty welcome to all of you from BAWA!

Saw dust Session for April 2012

Following the demonstration of Mark Knize on "wooden rings" we will have a color session outside of Wayne's Shipman's woodshop from 12:30 to 2:00. This will be limited to small group of fifteen but is free. The color session will have three teachers. Mark Knize will show some acrylic rings and how to "rub and buff" your work. Mike Sherpa will illustrate how to use black and white applications on vessels. Norm Robinson will demonstrate the use of gold leaf applications on projects. These will be very quick and compacted demonstrations.

We want to express our appreciation to these teacher for sharing their discoveries with us.

Dublin Woodcraft - BAWA 3% Rebate for Member Purchases

Dublin Woodcraft provides a valuable service to our membership and the community, so please consider them for your next purchase or turning class!

Your purchases at Dublin Woodcraft also help the club! Did you know that BAWA gets a 3% rebate on all purchases made by BAWA members? For this to work we need you to bring your receipts (or a copy) to next meeting. The rebate is only good for recent purchases – we can only turn in receipts if they are less than six weeks old! So be sure to bring in your current Woodcraft receipts (or a copy) and give them to Bill Mellberg or place them in the wood Woodcraft Receipt Box on the membership table!

Hartville Tool 15% Discount

Hartville Tool is still offering a 15% discount off regular prices to BAWA members who are registered in the program. Hartville has recently expanded their offerings on turning tools and supplies, and a new master catalog was just released in December and is available at our meetings. Their prices are very competitive even before the 15% discount. Add free shipping on orders over \$99 and no tax and you've got a great deal at Hartville Tool! But, you have to be registered thru BAWA to qualify for the 15% discount. If you want to register, send an e-mail to Dean Adkins at "adkd@chevron.com" stating your home and e-mail addresses. If you don't have their master catalog pick one up at the next meeting!

Note from Hartville Tool's Doug Weingart:

If you haven't visited our web for a while you are going to find our web site quite different than it was early last summer. The reason is that we suddenly and unexpectedly lost our previous web site provider. When you go to log into your account, or to check-out you will see a message that says:

"Notice to Returning Customers! *Due to our recent changeover to a new web platform and order fulfillment system you will be required to create a new online account if you have not placed an online purchase since 6-9-11. We do apologize for this temporary inconvenience! Note also that your account activity prior to then may not be available online until we have completed our transition. We greatly appreciate your patience as we work diligently to provide you with a faster, easier, and more enjoyable shopping experience!"*

Unfortunately this has also meant the temporary loss of the function that allowed Club Members to see their discounted pricing online as they shopped. At this time we do not know when this function will be restored. This does not mean that you can't get the 15% discount. It just means we have to do things a bit differently for a while. This applies to all clubs and members participating in our discount program.

When you order you just need to be sure to mention that you are a registered BAWA Club Member in the checkout notes and we'll be sure to give you the discount on all applicable items, as we physically review every order that comes through. The discount will not show on your e-receipt, but it will show on the hard copy that comes with your order.

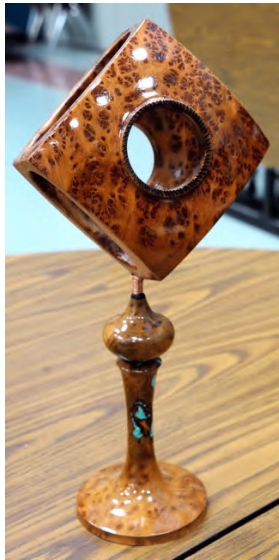
If you prefer, you can also call us to place their order at 800-345-2396 and mention the discount. Hope this is helpful!"

*Best Regards,
Doug Weingart
Club Discount Program Coordinator
Hartville Tool clubs@hartvilletool.com www.hartvilletool.com*

March Show and Tell



Bill Walzer made optimal use of a bowl turned into a funnel



Sculpture by Larry



Lidded "Wormy" boxes by Jim Abreu



Larry Dubia brought in several off center turnings.



Larry Dubia also brought in some examples of his work in dyed vessels. Getting the dye to penetrate

