

BAY AREA



WOODTURNERS
ASSOCIATION
A CALIFORNIA NONPROFIT CORPORATION
LOCAL CHAPTER AAW

November 2014

Volume 18, Issue 11

Kip Christensen Flies Into Bay Area Just for BAWA

Kip Christensen will be our professional demonstrator for the November 8th meeting, flying in from Utah just for our club meeting. Many BAWA members have seen Kip demonstrate at multiple symposiums over the years, and know he is always a crowd favorite. Kip is best known for his turned boxes, but is also gets high acclaim for the breadth of techniques and projects he can complete over a one day session. Make sure to bring a notebook to this full day presentation, there will be plenty of great ideas for holiday gifts and much more.



Kip W. Christensen, PhD, is a Professor in the School of Technology at Brigham Young University in Provo, Utah. His primary teaching areas include wood prototyping, furniture design, manufacturing, and supervising student teachers in Technology and Engineering Education. Dozens of his students have received national recognition for having furniture they designed and built accepted into juried exhibitions and published in books featuring exceptional furniture designs. Kip is also a well-known woodturner. He has co-authored three books* and co-produced eight instructional dvds about woodturning**. His work has been published in over two dozen books***. He has also authored several articles regarding woodworking and technology education. These have been published in: American Woodturner, American Woodworker, Fine Woodworking, Journal of Industrial Teacher Education, Journal of Technology Studies, Tech Directions, The Technology Teacher, Wood, Woodcraft Magazine, Woodworker West, World of Wood, The Router (UK), Woodturning (UK), and Drechseln (Ger.). His turnings have been pictured in a variety of magazines and journals, and displayed in many galleries and international juried exhibitions.



His work is also housed in numerous collections, both public and private. Kip has been invited to give over 250 national and international presentations at workshops, conferences, and symposia including the American Association of Woodturners National Symposium, Alan Batty Woodturning Symposium (UK), Australian Turnfest, Desert Woodturner's Roundup, Pacific Northwest Woodturning Symposium, Rocky Mountain Woodturning Symposium, Southwest Association of Turners Symposium, Totally Turning Symposium, Turn West Symposium (Canada), Utah Woodturning Symposium, Craft Supplies USA, and Arrowmont School of Arts and Crafts. From 1998 to 2007 Kip served as Director of the Utah Woodturning Symposium, the longest running woodturning symposium in the world.



More on following page...

...continued from previous page

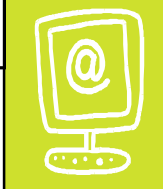
While Kip is best known for his turned lidded containers, he is also comfortable working with bowls, vessels, spindles, and production turning. He has pioneered the use of elk antler as a medium for artistic turning. His work is characterized by clean lines and fine detail. Gallery curator and author Kevin Wallace wrote "The work of Kip Christensen is always aesthetically pure and technically precise". Kip has a particular interest in woodturning education and is often involved in instructing teachers how to help others learn how to turn wood on a lathe.

Kip has a long list for projects he expect to finish including an array of holiday gifts that you will be able to replicate after watching his demonstration. Kip is a great teacher and presenter - this will definitely be an outstanding event .

Doors open at 8:30, the meeting starts at 9:00 sharp and will run to 3:00. If you haven't done so recently, bring some pieces for show-and-tell and don't forget to pack something for the wood raffle. See you Saturday!



Link of the Month



Submitted by: Tim Kennedy

The YouTube video below is a great presentation on basket illusions. It is in two parts and total length is about 1.5 hour.

Follow the link below:

http://www.youtube.com/watch?v=5A4UI_7OYDo&feature=em-sub digest

Do you have a favorite website you think BAWA members would find interesting and informative? If so, then please send us the website name, address and a few sentences about why you think the website is cool!

Send info to: [Louie Silva](#)

CRAFT SUPPLIES 10% DISCOUNT ORDER

The 10% discount applies to any published price (including sale items, close-outs, etc.) and there's no tax and S&H is free on almost all items. Craft Supplies has a new catalog that includes new items with a different item numbering system. There have been some price increases as well so don't use old catalogs. If you don't have the latest catalog please look on-line to pick your loot and check prices and item numbers.

Orders are placed by filling out an electronic order form which is available on the BAWA website. E-mail the form to Dean Adkins (adkd@chevron.com) with all the requested information:

- Member name, phone number and e-mail address
- Catalog item number
- Catalog page number
- Item description
- Quantity ordered
- List / sale price (before 10% discount)

You can call Dean (925-998-4111) to place an order, but must follow up with an e-mail to confirm all the required information.



BAY AREA WOODTURNERS ASSOCIATION

A CALIFORNIA NONPROFIT CORPORATION
LOCAL CHAPTER AAW

Club Meetings

Meetings are the 2nd Saturday of each month unless otherwise noted.

8:30 doors open for setup, use store and library, swap ideas, view displays

9:30—12:30 meeting and demo

Meetings will be held at the PHEC Woodturning Center, 1 Santa Barbara Road, Pleasant Hill, CA.

See bayareawoodturners.org/ for directions and club information.

BAWA Officers Meeting -

Officer meetings are open to all members. Contact [Bill Mellberg](mailto:BillMellberg) if you would like to be on the agenda.

2014-2015 Event Schedule

Nov 8th	Kip Christensen
Dec 13th	Holiday Party
Jan 10th	Jim Rodgers
May 23rd	Jason Breach (UK Turner)
May 25th	Jason Breach Workshop

The Bay Area Woodturners Association is a local chapter of the American Association of Woodturners. Our purpose is to provide a meeting place for local turners to share ideas and techniques and to educate the general public regarding the art of turning. The Association usually meets the second Saturday of each month. The Association periodically sponsors exhibitions and demonstrations by local and internationally known turners.

President
Bill Mellberg
wjmellberg@comcast.net

Vice President
John Cobb
Cobbemail@gmail.com

Secretary
David Fleisig
dhfleisig@yahoo.com

Treasurer
Joel Albert
joelalb@yahoo.com

Member at Large
Kathy Kennedy
kkdp54@gmail.com

Pleasant Hill Adult Education (PHAE) Liaison
Jim Rodgers
Jlrodgers236@comcast.net

Librarian
Cindy Navarro
Navaluni@comcast.net

Membership Co-chairs
Hugh Bevin-Thomas, Karen Rice & Ed Steffinger
ahbt@sbcglobal.net ,
karen@loonlover.net ,
ersteffinger@yahoo.com

Store Manager
Richard Kalish
rikalish@yahoo.com

Webmaster
Jeff Tanner
jtanner@gschq.com

Newsletter Editor
Louie Silva
banjohead@comcast.net

Audio Visual
Bruce Speights & Larry Brooks
retired6302004@yahoo.com ,
ibgolfing@sbcglobal.net

Woodmeister
Tony Wolcott
twolcott@albanvca.org

Educational Coordinator
Jan Blumer
jacquesblumer@hotmail.com

Pro Demonstrator Liaison
John Cobb
Cobbemail@gmail.com

Staff Photographer
David Fleisig
dhfleisig@yahoo.com

Social Coordinator
TBA

Larry Lew Burns it up at October Meeting!

BAWA's October meeting was an excellent opportunity to see one of our most skilled craftsman and innovators present and discuss techniques he has perfected over time. Larry Lew, long time BAWA member, gave a well-organized presentation outlining the evolution of his work involving carving and pyrography along with a demonstration of his latest technique for surface embellishment.



Larry started carving over single piece and segmented vessels many years ago and through trial and error realized the utmost importance of shape and form. There is no hiding an unattractive shape, carving and coloring are meant to enhance a piece, they will not fix it. There are many aspects that go into the design, from the ratios of the Golden Rule to where the piece will be displayed in relation to the viewer's eye. Next time you are looking at a gallery or even the BAWA show-and-tell gallery spend a moment and evaluate the shape from different heights and see how your perception changes.



Larry has great respect for the work of craftsmen that date back centuries. He has been influenced by the remarkable work of Native American potters and encouraged everyone to explore the vessel shapes of the Southwest Indian tribes. For his surface embellishments, he focuses on images found in nature – vines, leaves and flowers. Larry takes plenty of pictures and maintains a book of images to inspire his designs.

Once he finds his designs, he traces the images onto graphite paper for application to the vessel. Larry started out free hand drawing but has also had good success with a software program (Topaz) which turns color images into black and white line drawings with shading. Once traced onto the graphite paper, he cuts out the individual components and tapes them to the vessel to transfer the designs.



When the images have been completely replicated onto the wood piece, Larry uses a Burnmaster and four pyrography pen tips to make burn in the design. His array of tips burn in the thick outlines of grape vines, thin veins of leaves and subtle shading to give the design depth. In the end, his pyrography looks like carving, creating a sense of three dimensional embellishments without removing any wood.

Larry was kind enough to give us the slides from his presentation which can be found under the "Meetings Materials" tab on the website. Given the full house at the end of Larry's presentation, he did a great job demonstrating skills and techniques many members find interesting. We look forward to seeing how the membership applies these skills and pushes the envelope even further.

Thank you Larry for a great demonstration – it was a fantastic day.

BAWA Classified Ads



We want members and others with items to sell or trade, services to render or if you're just looking to find a specific item from fellow BAWA members. Please send ads to Louie Silva at: banjohead@comcast.net.

You can't beat the price...FREE!!

Newsletter Articles

Got a great idea you want to share with your fellow Woodturners? Whether it is a turning tool, turning technique, finishing process or anything at all related to turning, your BAWA newsletter can always use an article. If you have pictures, all the better. If you need help writing it up or taking pictures, we're here to help. That's what our club is all about - sharing.

Contact either club president
Bill Mellberg
Email: jbmellberg@comcast.net

or newsletter editor
Louie Silva
Email: banjohead@comcast.net

BAWA Has Lost One of Its Own



The Bay Area Woodturners Association has lost one of its own. Long time member Roman Hruska passed away on Monday morning, October 27th after an extended illness and a recent stroke. The Hruska family is not planning a public memorial. Final arrangements are awaiting the arrival of all family members.

Roman was a guest Judge for the club competition at the last two Holiday Parties along with his wife Mary Ann. We will miss Roman and extend our collective condolences to Mary Ann and the Hruska family for their loss.

Hruska, Roman Lee Sep 24, 1933 - Oct 27, 2014 Walnut Creek, CA. Roman Lee Hruska, the eldest child of Roman and Victoria Kuncel Hruska, was born in Omaha, NE. He and his brother, Quentin, and sister, Jana, enjoyed a large extended family of aunts, uncles, and cousins. Roman graduated from Omaha Central High School and the University of Omaha. He attended Czech language school on Saturdays at the Sokol Hall during his youth. He served in the Air Force stationed in France.

He married Mary Ann Behlen in Columbus, NE in 1964 and they moved to San Francisco. A year later they moved to Walnut Creek where Roman built the Arroyo Car Wash. Always self-employed he owned Farmtec, Inc. in Oakland and Robco USA in Concord and invested in real estate. All his life he nurtured interests in many things from astronomy and photography to history and travel. He and Mary Ann visited more than 50 countries including a trip on a Russian icebreaker sailing nearly to the North Pole. He worked the New York Times Sunday crossword puzzle in an hour most weeks. He was an avid reader. One corner of his mouth would crinkle and warn of an approaching witty remark! He could fix anything.

Woodturning captured his interest after a week-long class at Arrowmont School of Arts and Crafts in Tennessee and he developed a fine turning studio and skills. He and his wife have created a collection of wood art from many internationally recognized artists. His Czech heritage was always an important part of his life so after his father's death he took over the cabin his family had enjoyed for over 50 years at Sokol Camp on the Platte River near Omaha. He and Mary Ann turned it into a year-round cottage, his Villa on the Platte, and enjoyed many wonderful weeks there with family and long-time friends.

Roman is survived by his wife, Mary Ann; children, Roman and his wife, Wendy, and their sons, Roman and Kent; Libby and her husband, Frank Fletcher, and their sons, Sebastian and Xavier. No Service is planned. Memorials are suggested to the Walnut Creek Library Foundation, PO Box 4979, Walnut Creek CA 94596 or the National Czech and Slovak Museum and Library, 1400 Inspiration Place, Cedar Rapids IA 52404.

(Obituary Courtesy of Omaha.com)

I owe many things to the generosity of Roman and Mary Ann Hruska—the most important of which is the love and joy I have found in Woodturning. Years ago, I was living in a condo with no access to a shop and I caught the turning bug in a big way. I put out an email wondering if anyone would be willing to let me use their shop and much to my surprise and joy, Roman answered right away. For nearly two years, he let me have the run of his shop and gave me the gift of his trust, spirit, and good humor. What an amazing gift—I am still staggered by their generosity. It's a debt of honor that I am still repaying forward, and one of the main reasons I have been so active in the club and in teaching. We have lost someone special and I challenge all of us to do some good in his name.

Joel Albert

BAWA Fun in December!



**Winslow Center: 2590 Pleasant Hill Rd.
(Corner of Taylor Blvd. & Pleasant Hill Rd.)**

Our Holiday Luncheon, Demo Raffle and Club Competition will be held at the Winslow Center from 11:00 AM to 3:00 PM on Saturday December 13th. We will need a group of volunteers to arrive at 11:00 sharp to help set-up the room with tables and chairs. If you signed up to attend and will be bringing a salad, desert, or drinks, please plan to arrive at 11:30. We will try to get everyone registered for the club competition as you arrive and we will have extra tables for displaying all entries. There is a large all-weather parking lot that adjoins the Center, which is a two-story structure. Our event will be on the second (2nd) floor where there is large meeting / dining room. The club will provide the lunch entrée again this year, which will be catered by Tullio's of Walnut Creek. This year we will plan to eat around Noon with the competition and raffle following the meal. At the end of the event we request that everyone help with the clean up and take down of the room. This is our highlight BAWA event of the year and a lot of fun for members and their spouses. Plan to bring your best work to show and some spending money for the Demonstrator Raffle, which has some beautiful work from this year's club meetings; believe me no one will leave hungry.

Auction Returns to This Year's Holiday Luncheon

The auction last year was such a success we are going to do it again at this year's Christmas party. We are looking for donations like:

- Turned pieces – Bowls, Hollow Forms, Boxes, Spindles etc.
- Mentoring
- Special wood
- Tools
- Services (e.g. wood stabilization, coring etc.)

It's a great chance for us to get that special someone in our lives the perfect Christmas gift. Or continue to collect each other's work, learn, or pick up a really beautiful piece of wood or a useful tool. All proceeds will go to the club and will help support our programs.

We will begin accepting donations at the November Meeting

President's Message

November 2014



Our last regular meeting at PHAE for this year will be an all day demonstration by Kip Christensen from Utah. Kip is a talented demonstrator who teaches at BYU and had a long friendship with Dale Nish of Craft Supply who was also a professor at BYU in wood technology. Kip co-authored a book with Rex Burningham titled "Turning Pens and Pencils" that was first published in 1999 and became the bible for many first time wood tuners. Kip has a long list of national appearances at local clubs and with AAW at many of their symposia around the country. I know you will enjoy this demonstration, which we hope will inspire you to turn some holiday gifts for family and friends.

This year's Holiday Party will be at the Winslow Center in Pleasant Hill on Saturday, December 13th from 11:00 to 3:00, with lunch catered by Tullio's of Walnut Creek. Once again the club will provide the entree for the lunch, but the membership is requested to bring salads, deserts and drinks. A sign-up sheet will be passed around at Saturday's meeting asking for attendees to sign-up in advance. There will be more than enough food for everyone to enjoy. This event is also our club competition, so bring your best pieces to be judged for awards, we also conduct a silent auction and sell tickets for the demonstrator raffle which contains pieces from this past year's professionals. This is our best social event of the year with fun for everyone during this special holiday season, so bring your spouse to enjoy a great party.

As we close out the year I wanted to reflect on the many accomplishments our club has enjoyed. We continue to enjoy our relationship with Jim Rodgers and the Pleasant Hill Adult Education Wood Studio, which has been our home since October 2012. Please support the classes offered through the school to improve your skill level and encourage exploration of new talents and interests. Thanks also to Jan Blumer who coordinates our involvement with local high school wood shops using members in the classroom.

I want to personally thank the BAWA Board of Directors for their time and talent in conducting the business of the association for the past two years. Please tell John Cobb, Joel Albert, David Fleisig and Kathy Kennedy that you appreciate their efforts and sacrifice of time and energy to make the club fun and educational. The club has continued to grow in head count and we consistently have 60 plus members in attendance at each meeting. We are fiscally sound with an annual budget that exceeds \$20K which allows us to present a high quality program with four professional demonstrators throughout the year. We are blessed to have many local talented members who come forward to conduct interesting demonstrations of their skills that always amaze.

We have improved the quality and quantity of our club assets with new additions to the Library, Store and Audio Visual equipment thanks to the efforts of Cindy Navarro, Rick Kalish and Bruce Speights. Thanks to Karen Rice, Hugh Bevin-Thomas and Ed Steffinger who greet our new and returning members every Saturday and collect our dues. The club needs talented people who work behind the scenes to maintain our website and edit our newsletter, so thanks to Jeff Tanner and Louie Silva for their time and talent in creating a way for us to communicate with each other in this technology driven society. Other members like Tony Wolcott, Larry Brooks, Arturo Gomez, Vern Stovall and John Hile help me with each meeting.

Our club is successful and fun because you make it that way by volunteering your time and talent for the enjoyment of the group. Let's continue to improve our club and create new opportunities to learn and share our love of woodturning.

*Respectfully,
Bill Mellberg
President BAWA 2014*

Trees of the Bay Area #8

Ceratonia Siliqua, carob tree



By John Doyen and Tony Wolcott

Here is a tree highly sought by woodturners, but probably not recognized by the same folks out on the street. A good description of the carob tree: moderately stable, beautiful color, easily worked but seldom of very large size. The color of the wood is variable – pink to red areas, white and off white, sometimes darker browns even black with sunset like reds. The color is one big reason to turn this wood. The other reason is the ease of turning and the absence of cracks and wood distortion. I have cut branches off carobs and successfully turned end grain bowls.

Identifying *Ceratonia siliqua* is not difficult. There are male and female trees, similar to a few other trees such as *Ginkgo biloba* and *Pistacia chinensis*. If you see a row of trees, some with bean like fruit hanging down and others without fruit, you may be getting close to a carob. This tree is a broadleaf evergreen; it does not lose its leaves but still a “hardwood”. As such, you will not see this tree in colder climates, typically found by large bodies of water in temperate zones or in semi –tropical areas. In the bay area carob trees are very common in San Francisco, east bay, south bay, Marin. They are less common the further inland you go due to harder frosts.



The carob tree is best identified by the shiny, leathery compound leaves. Each leaflet is nearly round. On the female trees you will find shiny, lavender brown, flattened legumes. After all it is in the Fabaceae family, and in Northeastern Africa these ‘beans’ were extensively used as a high source of protein. The very uniform seeds were once used as the jeweler’s carat weight. Now the fruit is ground up into a powder and used as a chocolate substitute. The fruit is also used as a stabilizer in the cosmetic industry. The flower on the female tree is heavy and with an unpleasant odor.

There are many carobs growing in the general bay area, often as street trees. A big removal in Turlock, more recently in San Jose, kept woodturners at a feverish pitch. Keep your eyes open as carobs rarely live beyond 100 years. The trick is to find trees that are not decayed extensively at the base. Although the diameter is rarely over 16”, smaller wood produces small bowl gems. It is a wood very worth the trouble.



Chocolate Substitute



Carob Tree Crotch Preparation

October Show and Tell



Bill Mellberg-Dyed Maple
Burl Bowl



Andrew Baxter-Xmas
Ornaments



Michelle Brooks-
Pyrography Platter



Gary Bingham-
Recombined Cut in
Two Bowl



Mark Knize-Pepper Boxes &
Wedding Favors



Jay Holland-Redwood
Lighthouse



David Fleisig-Two Small
Cups and Bowl



John Cobb-Hollow Vessel



Cindy Navarro-Threaded
Boxes