

BAY AREA



**WOODTURNERS**  
ASSOCIATION  
A CALIFORNIA NONPROFIT CORPORATION  
LOCAL CHAPTER AAW

July 2018

Volume 22, Issue 7

## Turn for Troops on July 14th

The July meeting is our fifth annual Turn for Troops event. This is a great opportunity for club members to come in and turn pens that will be donated to US troops serving out of the country.



If you have never turned a pen before, it is a great time to learn as there will be many experienced members who are willing to give you a one on one lesson.

This year we have a goal of 170 pens and look forward to seeing everyone participating in this community service event for those who are called to serve our country.

Safety Reminder: that participants must wear closed toed shoes and safety glasses or a face shield when in lathe area and sharpening area's. Last year it was very warm and a few members wore sandals and Jim voiced his concerns about this. The goal is for all of our members to be safety compliant for this event.





A CALIFORNIA NONPROFIT CORPORATION  
LOCAL CHAPTER AAW

## Club Meetings

Meetings are the 2nd Saturday of each month unless otherwise noted.

8:30 doors open for setup, use store and library, swap ideas, view displays

9:00—12:30 meeting and demo

**Meetings will be held at the PHEC Woodturning Center, 1 Santa Barbara Road, Pleasant Hill, CA.**

See [bayareawoodturners.org/](http://bayareawoodturners.org/) for directions and club information.

### **BAWA Officers Meeting -**

Officer meetings are open to all members. Contact John Cobb at: [president@bayareawoodturners.org](mailto:president@bayareawoodturners.org) if you would like to be on the agenda.

## 2018 Event Schedule

July 14th	Turn for Troops 8:30 - 12:30
Aug 5th	Summer Picnic & Tool Swap (Sunday) 11:00-2:00
Sept 8th	Sam Angelo 8:30-4:00
Oct 13th	TBD

The Bay Area Woodturners Association is a local chapter of the American Association of Woodturners. Our purpose is to provide a meeting place for local turners to share ideas and techniques and to educate the general public regarding the art of turning. The Association usually meets the second Saturday of each month. The Association periodically sponsors exhibitions and demonstrations by local and internationally known turners.

President  
John Cobb  
[president@bayareawoodturners.org](mailto:president@bayareawoodturners.org)

Vice President  
Dave Bentley  
[vp@bayareawoodturners.org](mailto:vp@bayareawoodturners.org)

Secretary  
Anna Duncan  
[secretary@bayareawoodturners.org](mailto:secretary@bayareawoodturners.org)

Treasurer  
Peter Wolff  
[treasurer@bayareawoodturners.org](mailto:treasurer@bayareawoodturners.org)

Member at Large  
Kim Wolfe  
[memberatlarge@bayareawoodturners.org](mailto:memberatlarge@bayareawoodturners.org)

President Emeritus  
Joel Albert  
[cobbemail@gmail.com](mailto:cobbemail@gmail.com)

Pleasant Hill Adult Education (PHAE) Liaison  
Jim Rodgers  
[Jlrogers236@comcast.net](mailto:Jlrogers236@comcast.net)

Librarian  
Cindy Navarro  
[librarian@bayareawoodturners.org](mailto:librarian@bayareawoodturners.org)

Membership  
Hugh Bevin-Thomas & Karen Rice  
[membership@bayareawoodturners.org](mailto:membership@bayareawoodturners.org)

Store Manager  
Richard Kalish & Michele Freeze  
[storemanager@bayareawoodturners.org](mailto:storemanager@bayareawoodturners.org)

Webmaster  
Jeff Tanner & Greg Ketel  
[webmaster@bayareawoodturners.org](mailto:webmaster@bayareawoodturners.org)

Newsletter Editor  
Louie Silva  
[newslettereditor@bayareawoodturners.org](mailto:newslettereditor@bayareawoodturners.org)

Video Coordinator  
Dave Bentley, Larry Batti & Ed Steffenger  
[videocoordinator@bayareawoodturners.org](mailto:videocoordinator@bayareawoodturners.org)

Woodmeister  
Steve Griswold  
[woodmeister@bayareawoodturners.org](mailto:woodmeister@bayareawoodturners.org)

Educational Coordinator  
Jan Blumer  
[educationalcoordinator@bayareawoodturners.org](mailto:educationalcoordinator@bayareawoodturners.org)

Pro Demonstrator Liaison  
John Cobb  
[Cobbemail@gmail.com](mailto:Cobbemail@gmail.com)

Staff Photographer  
Rick Dietrich

Social Coordinator  
TBA

# Summer Picnic & Tool Swap

Sunday, August 5th, 11:00 to 2:00

Annual BAWA Picnic Sunday, August 5th, 11:00 to 2:00 Pleasant Hill Community Park 147 Gregory Ln, Pleasant Hill Picnic Area #2

The Event is potluck: we are breaking up what to bring alphabetically by last name

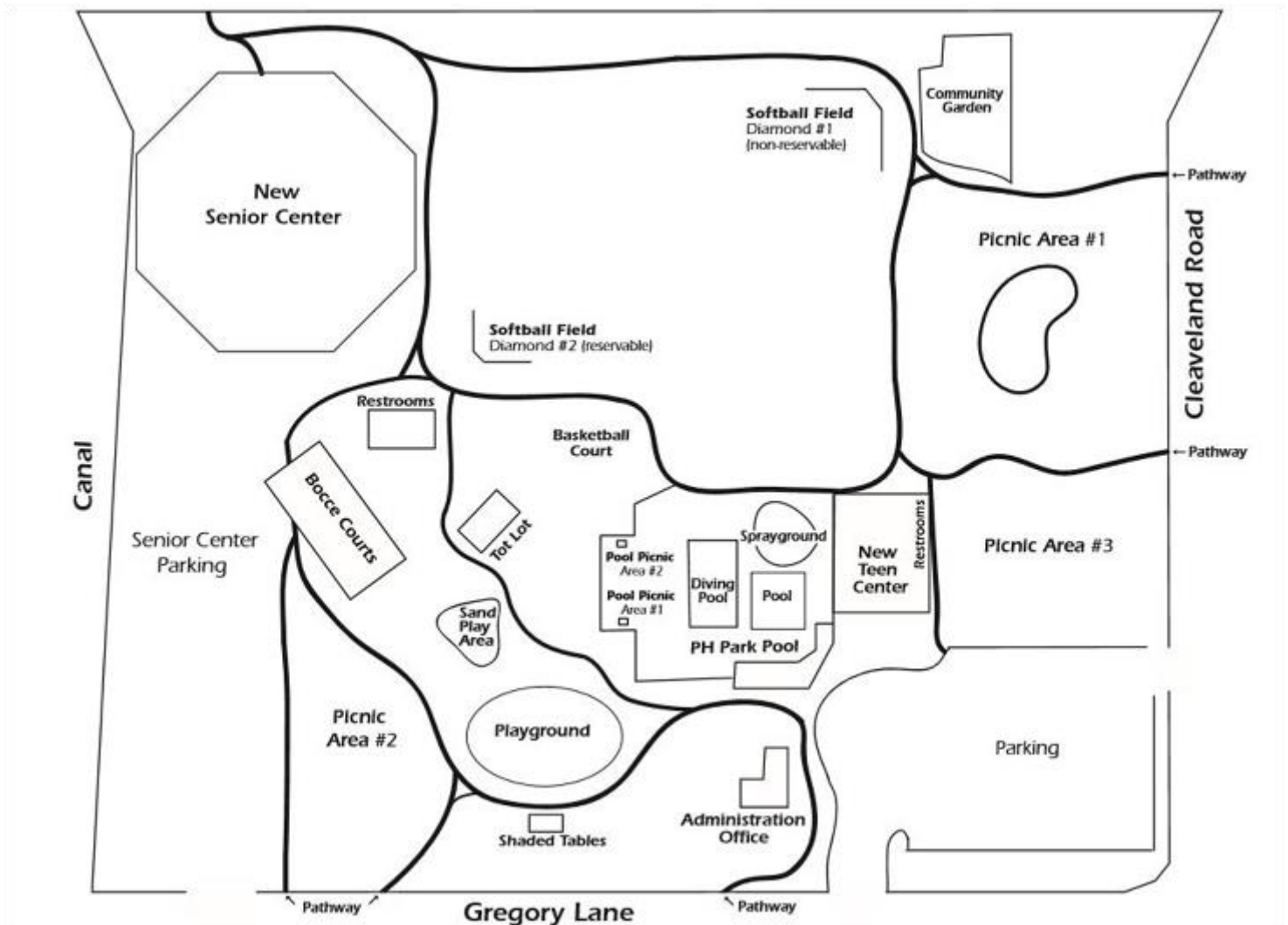
The club will provide burgers, brats and buns along with all the necessary serving utensils, plates, cups and condiments.

A - H : Cold Drinks (Soda, Iced Tea, etc)  
I - P : Sides (Baked beans, Salads, deviled eggs, etc)  
Q - Z: Desserts

## BAWA BBQ Picnic Location - Picnic Area #2

Sunday August 5, 2018 at 11am to 2:00

*147 Gregory Ln, Pleasant Hill. Plenty of parking in the Senior Center Parking Lot.*



# Jay Holland, June 9, 2018

## Discussing Ways to Enhance Turned Pieces

Jay Holland gave an informative talk to BAWA in June. He covered the use of carving tools, both electric and non-electric. His talk was informative and well put together. His talk created a clear picture of ways that he has enhanced and developed his technique of turning and carving over the years.



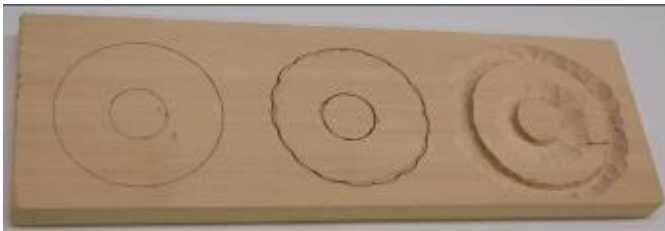
Growing up in Wyoming, attending school and teaching had an enormous impact on his art and ability to create and describe it. While attending school as a young man, it was mandatory for both men and women to attend shop classes, which included learning how to sew and how to make a shop apron for future shop classes. His shop classes covered wood, metal, leather, sewing and cooking to name a few. In Wyoming, he found himself making the items he needed using the skills learned in school.

If he wanted something wooden, he made it. If he needed something made out of leather, he designed it and added his personal art to the leather. Class sizes were small and trained class members to be quite self-sufficient.

If you missed the meeting in June, his entire presentation is on line, minus announcements and show and tell. Please give the Jay Holland presentation a view.

With many questions asked, Jay never had a chance to turn on his electric carving unit. He did bring versions of the same piece that showed the layout of a carved piece, the beginning stages of carving, enhancement to the carving by adding detail and the final steps needed to finish the carved and completed piece.

Jay's talk showed his versatility and knowledge of turning and carving with a long trail of art that helped him win many blue ribbons over the years and make one of a kind presents for his family and friends.



Steps in Carving Flower



Lay-out Tool



Assorted Carvings



Carved & Dyed Platter



"You guys better behave..."



Pyrographed Bowl



## President's Chatter

July 2018

BAWA sent a large contingent of members to Portland last month for the annual AAW Symposium. A dozen meeting rooms had professional demonstrators scheduled from 8:30 in the morning to 5:30 in the evening. The most difficult part of the day was deciding on which presenters to see and how much time to spend walking around the trade show. Many of the professional presenters BAWA has hosted over the past few years were there along with a number of international turners who rarely make it to the US. The event received high marks - and plans are already in place for next year's symposium in Raleigh North Carolina.

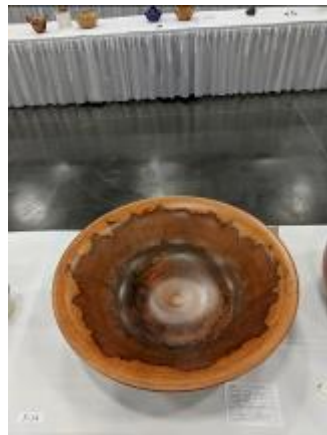
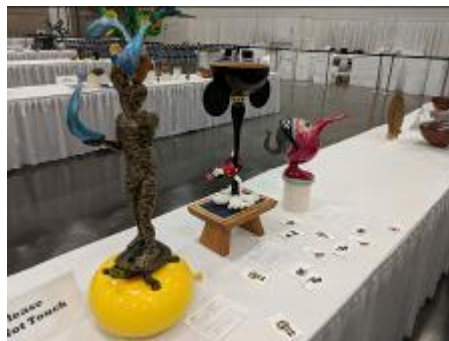
If you happen to be on the East Coast next June, it is worth a detour.

Our July meeting is once again an opportunity to give back and have some fun. Jeff Tanner has worked tirelessly to drill and glue over 150 pen blanks in preparation for our Turn-for-Troops event. This is one of my favorite meetings as we get to have some fun, check out the speed turning competition and make a bunch of pens that will be sent to US forces serving abroad. We will have 20 lathes set up with mandrels and all the tools so everyone should get a chance to turn a couple pens. If you have never turned a pen, we will have designated mentors to guide you through the process. One note, we do need to follow the turning school safety rules. Always wear eye protection and even if it's hot you need to wear closed toed shoes (no sandals or flip flops). I hope to see everyone on Saturday.

Keep turning

John

## Photos From 2018 AAW Portland Symposium



*Photos courtesy of Maureen Silva & Curt Liljedahl*

## Tips and Techniques

---

I hope this finds everyone well and having a good month. I am going to finish with this pyrography information and find something else for next month. How about some suggestions from all of you?



by Cindy Navarro

You are now ready to finish the piece. Sealing the piece protects and highlights the burning. You may use spray polyurethane, oil, paste wax or varnish with UV inhibitors. Follow the manufactures instructions. Make sure that if you colored the piece that your finish is compatible with whatever coloring you have used. You might use spray shellac to seal the piece before using any other finish.

Have fun and remember to work on scrap before working on your piece, it will save you from distress.

So you have begun or been wood burning for a while you may have encountered some problems, so here are some trouble shooting suggestions.

- If you get blobs or hot spots at the beginning or end of the line it means that you're holding the nib in one place for too long. Try to keep moving as you make contact with the surface. You can also blow on the nib before it contacts the surface to remove some heat, stop blowing once you make contact
- If your lines vary in width with scorch marks on the edges, the nib is set too high. This is when you turn down the heat and practice on a piece of scrap to find the correct temperature. It could also be because your nib is dirty with carbon and should be cleaned. You can use a scraper to remove scorch marks from your project. If there is mild scorching it can be removed with a cloth moistened with 91% rubbing alcohol, nothing less.
- If the lines appear uneven in thickness or color you are moving the nib at an inconsistent speed. This is where practicing on scrap refines your skill.
- If the line appears inconsistent or dirty it is because your nib is dirty. A dirty nib prevents even heating and presents an uneven surface to the work.
- If the work appears uneven when burning over grain lines it is due to the changes in grain harness. Test on a scrap piece of the wood prior to starting. This way you can adjust your speed or that the burning is even. Slow down over the hard grain and speed up over the soft areas. You can gently go over the areas that are light in color.
- If the work appears scratchy or fuzzy and there is uneasy movement of the nib then the work is not properly prepared. Sand through the grits or use a fine scraper to get an even surface. If you want a rustic effect then you can rough up the area where you want this effect.
- If when using a shading nib the lines appear patchy or uneven then you should place the lines next to each other as lines created using a shading nib don't overlap well. It could also be that the nib is too hot. Reduce the temperature and slow down additional burning.

Once your piece is completed lightly sand the surface with very fine sandpaper to remove the roughness. Foam core emery boards, like those sold at beauty supply stores are good for this as they lay flat and sand evenly. Then use a white artist's eraser to remove any remaining lines and finally use a lint free cloth or brush to remove any eraser bits or sanding dust.

## Book Reviews

---

While I was at the AAW Symposium in Portland in June I met the author of this book. It is a thorough look at spalted wood. As woodturners many of us value and seek out spalted wood for its beauty and designs aspects. It is a wood that does have an intricate beauty, but also can be quite difficult to work with due to the character of what spaltling does to the integrity of wood.

This book goes into depth about the history of spalted wood and how it has been used throughout history and the world to create works of art, not just in the world of turning, but in many parts of the woodworking and art world. It has beautiful pictures of examples of it's use throughout history.

The book also delves into the science of spaltling, including how to now cause wood to spalt and how to achieve obtaining the colors that one might want for a particular piece of art. Sara has spent much time researching all aspects of spaltling, including how to scientifically produce the results that can be specific to what you want.

If you have the interest to create your own spalted wood then this book is the best place to start to learn how to do just such a thing.

Reading this book will increase your knowledge of how to do that and also why and where this wooden aspect has been throughout history.

I recommend it and you will find a copy in the library starting in July.

Enjoy!



# Guest DVD Reviewer Gary Bingham

## Stone Turning, A complete “how to” DVD by Steve “Spike” Finch

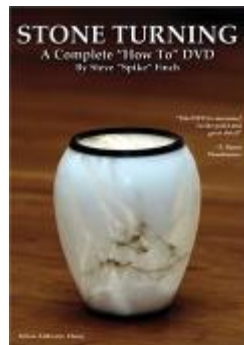


First of all of all I want to write that I have looked at many CD/DVDs on woodturning and this rates at the highest level. Even though I have no intention of turning stone on my lathe, I learned many fine techniques watching this master turner turn a stone vase. His example piece is a made from Italian Alabaster.

The author puts a plywood plug on the bottom of the raw chunk of rounded alabaster using 2-part marine grade epoxy, 5-minute type, to glue the plug to the alabaster. He says that CA glue is too brittle for this type of work. It cures in a half an hour and then he describes how to mount it to the lathe. Finch puts a pencil mark between the 1 and 2 numbered jaws for re-chucking purposes. He uses special stone turning carbide tools, which he highly recommends to turn the piece. at between 200-300 RPM. It's recommended to use dust collection close to the piece. He describes in detail how to cut a segmented piece for both the top and bottom of the vase. Using segments adds more stability to the piece.

Finch is very precise in his explanations and his turning techniques. He uses small light cuts for his work, then wet sands up to 1200 grit after starting with regular sand paper at 60 grit. He used a jell varnish and paste wax to finish.

Even if you have no intention of turning stone, I think you would benefit by viewing this DVD which is in our store (only \$5 each) and library.



## Rockler Helps BAWA Members

BAWA members receive a 10% discount when purchasing directly at the Concord Rockler Store at:

<http://www.rockler.com/retail/stores/ca/concord-store>.

Mention your BAWA membership when checking out, to receive your discount. Rockler also donates part of the proceeds back to the club which help support our Holiday Party raffle.



## BAWA Classified Ads



We want members and others with items to sell or trade, services to render or if you're just looking to find a specific item from fellow BAWA members. Please send ads to Louie Silva at: [newslettereditor@bayareawoodturners.org](mailto:newslettereditor@bayareawoodturners.org)

You can't beat the price...FREE!!

*June Show and Tell*



David Bentley-Carved Box



Vern Stovall-Carved Goblet



George Hamilton-Carved Clock



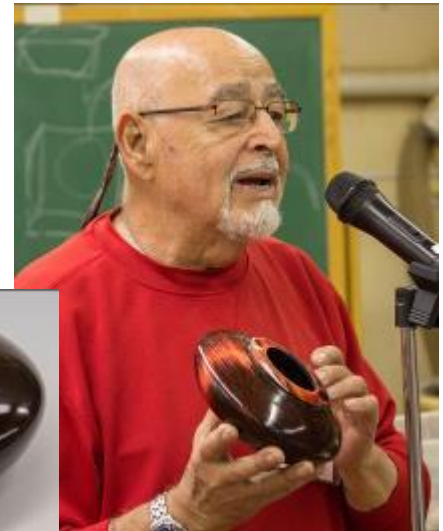
Tim Kennedy-Three Bowls



John Lawson-Bowl



Harry Levin-Hollow Form



*Continued on next page*



*June Show and Tell  
Cont.*



Roz Harper-  
Carved Bowl



Brad Adams-  
Carved Bowl



Jim Campbell-  
Bowls



Bob Bean-  
Pepper Grinder



Kim Wolfe-  
Bowls



Rick Kalish-  
DIY CNC Machine

## CRAFT SUPPLIES 10% DISCOUNT ORDER

The 10% discount applies to any published price (including sale items, close-outs, etc.) on almost all items. Craft Supplies has a new catalog that includes new items with a different item numbering system. There have been some price increases as well so don't use old catalogs. If you don't have the latest catalog please look on-line to pick your loot and check prices and item numbers.

Orders are placed by filling out an electronic order form which is available on the BAWA website.

E-mail the form to Dean Adkins (adkd@chevron.com) with all the requested information:

Member name, phone number and e-mail address

Catalog item number

Catalog page number

Item description

Quantity ordered

List / sale price (before 10% discount)



You can call Dean (925-998-4111) to place an order, but must follow up with an e-mail to confirm all the required information.

## Attention BAWA members who shop on Amazon.com

BAWA is always looking for ways to generate funds to improve our Club. BAWA recently registered with Amazon's program to support charitable organizations, AmazonSmile. It is an easy, no cost way for our Club to benefit from your Amazon.com shopping expenditures.

AmazonSmile is a simple and automatic way for you to support your favorite charitable organization; **BAWA!** When you shop at [smile.amazon.com](https://smile.amazon.com), you'll find the exact same products, prices, and Amazon Prime benefits as Amazon.com, with the added bonus that Amazon will donate .5% of the purchase price to BAWA.

Here's how it works:

To shop at AmazonSmile simply go to [smile.amazon.com](https://smile.amazon.com) from the web browser on your computer or mobile device. On your first visit to AmazonSmile, you need to designate BAWA to receive donations before you begin shopping. We are one of the almost one million charitable organizations registered with Amazon Smile. From then on when you enter Amazon through <https://smile.amazon.com/> every eligible purchase you make will result in a donation to BAWA.

You may want to bookmark the AmazonSmile URL to your desktop or mobile device to insure that you don't end up at the standard Amazon portal, thus bypassing benefit to BAWA.

If you haven't already done so, please consider registering with AmazonSmile and designating BAWA as your beneficiary. And encourage your friends and family to do likewise! We look forward to updating membership monthly on donations from this unique program.

